

BENE

ENTERPRISE

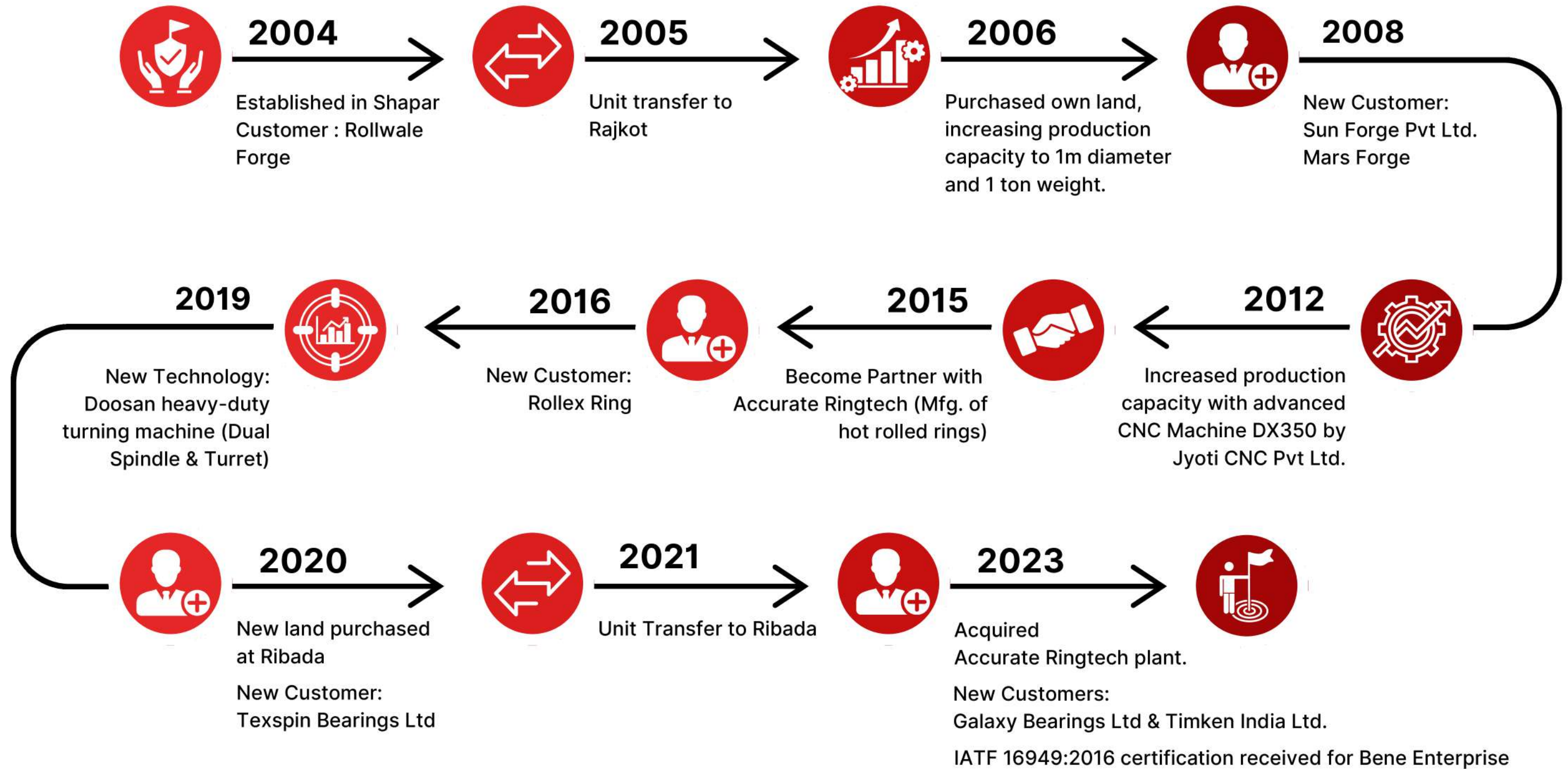
Pioneering Precision & Progress



ABOUT US

- A Technology & Engineering driven firm set to achieve milestones in metal forming, heat treatment and finish machining. We presently serve the Automotive and Bearing Industry. Being one of the fastest growing forging firms in Rajkot; we have manufacturing unit in Metoda GIDC. With expand our more manufacturing facility, we wish to increase the scope of customers we cater to end in the process increase our wingspan to other industries.
- An INR 4 crores conglomerate with a work force of 45 men, we have great repository of metallurgical know-how, design & engineering expertise and manufacturing prowess in the region. We are backed by more than 30 years of experience in manufacturing. We offer full-service supply capability to our geographically dispersed marquee customers from concept to product design, engineering, manufacturing, testing & validation.
- Developing our own technology, continuously improving our technical processes, adopting the latest manufacturing processes, and constantly training our workforce to create a talent factory has been the foundation of our success.
- We are an IATF 16949 certified Quality Management System.

YEARS WITH A STEP FORWARD





OUR VISION



At Bene Enterprise, our vision is to redefine precision in forged bearing rings. We strive to be the global leader in innovative, high-quality components, driving progress in manufacturing excellence and delivering unparalleled value to our customers.

OUR MISSION

01.

At Bene Enterprise, we aim to manufacture with advanced forging technologies to produce precision bearing rings that lead the industry in quality

02.

Customer satisfaction drives everything we do, as we focus on delivering reliable, tailored solutions that support our clients' success.

03.

We are committed to sustainable growth and operational excellence, ensuring our processes are efficient, innovative, and environmentally responsible.



CUSTOMERS



ROLEX



TIMKEN

ABC
Bearings Limited



CERTIFICATE

➤ IATF 16949:2016



Reg. Number	18288 - T		
First issue date	2022-09-21	Last change date	2023-10-26
Valid Until	2025-09-20	IATF Number	0458637

Quality Management System Certificate **IATF 16949:2016**

We certify that the Quality Management System of the Organization:

BENE ENTERPRISE

Is in compliance with the standard IATF 16949:2016 for the following products/services:

Manufacture of hot forged rolled rings through the processes Heating, Trimming, Forging, Machining, Heat treatment.

President
Giampiero Belcredi

Exclusions: 8.3 related to the product design

This certificate is issued in conformity with IATF Rules – Fifth Edition.
Maintenance of the certification is subject to annual survey and dependent upon the observance of Kiwa Cermet Italia contractual requirements.

This certificate is composed of 1 page.

Kiwa Cermet Italia S.p.A.
Società con socio unico,
soggetta all'attività di
direzione e coordinamento di
Kiwa Italia Holding Srl
Via Cadriano, 23
40057 Granarolo dell'Emilia
(BO)
Tel +39.051.459.3.111
Fax +39.051.763.382
E-mail: info@kiwacermet.it
www.kiwa.it

BENE ENTERPRISE

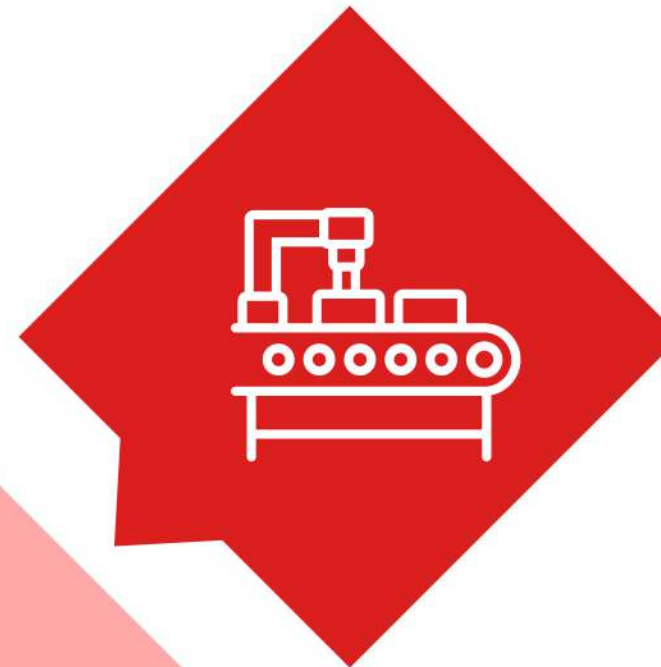
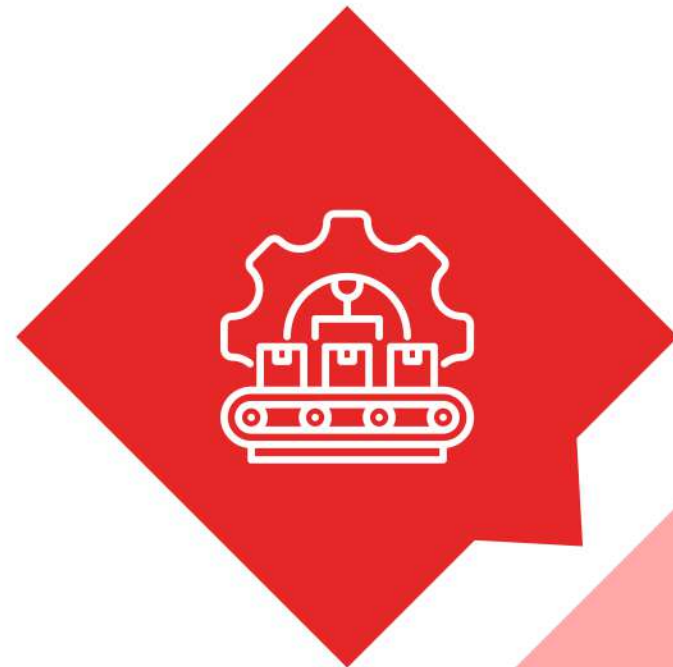
Certified Sites

- Plot No. G-2130, Kishan Gate, Road-I, Kishan Auto Road, Gidc Lodhika,
At. Metoda, 360021 Rajkot, Gujarat - India – **IATF USI: PMAW5H**



MANUFACTURING FACILITY

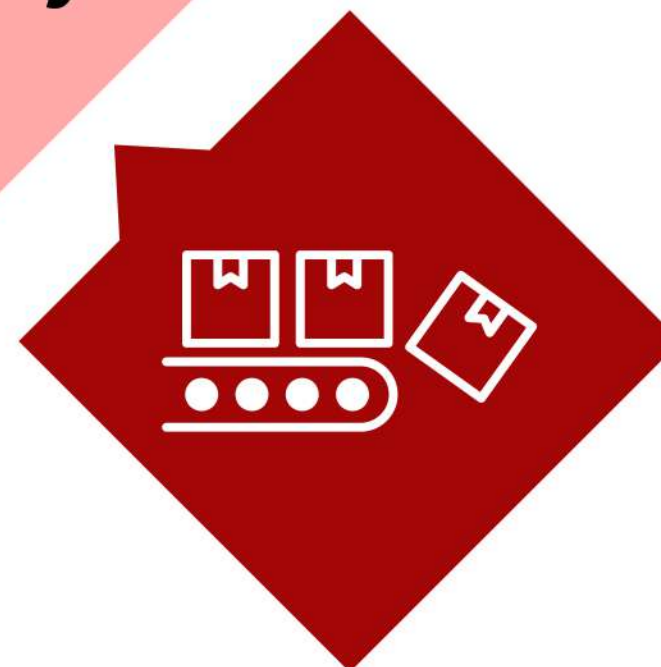
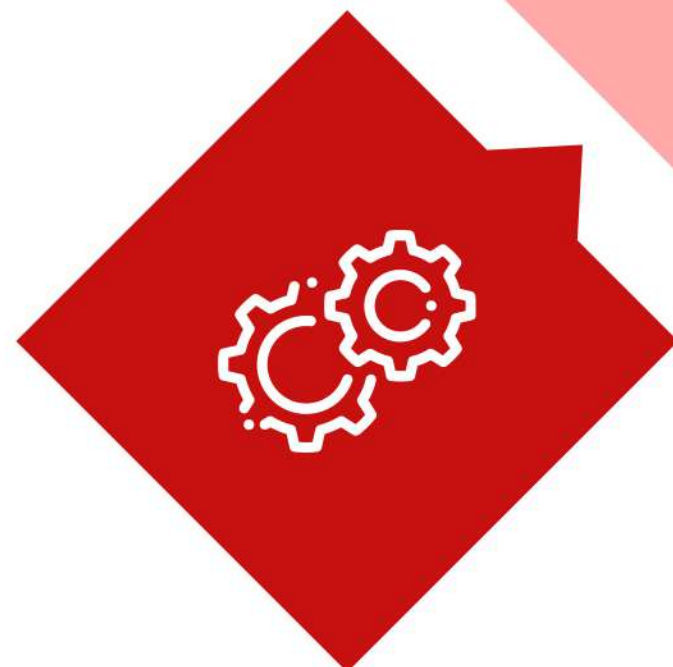
01 | Manufacturing of hot forged rolled rings through the process Heating, Trimming, Forging, Machining, Heat Treatment
3 Forging Line
4 Heat Treatment Furnes



(Machining work of Auto parts Forged Rings, Bearings Race, various types of Rings. Other Parts as per Customer Requirement)

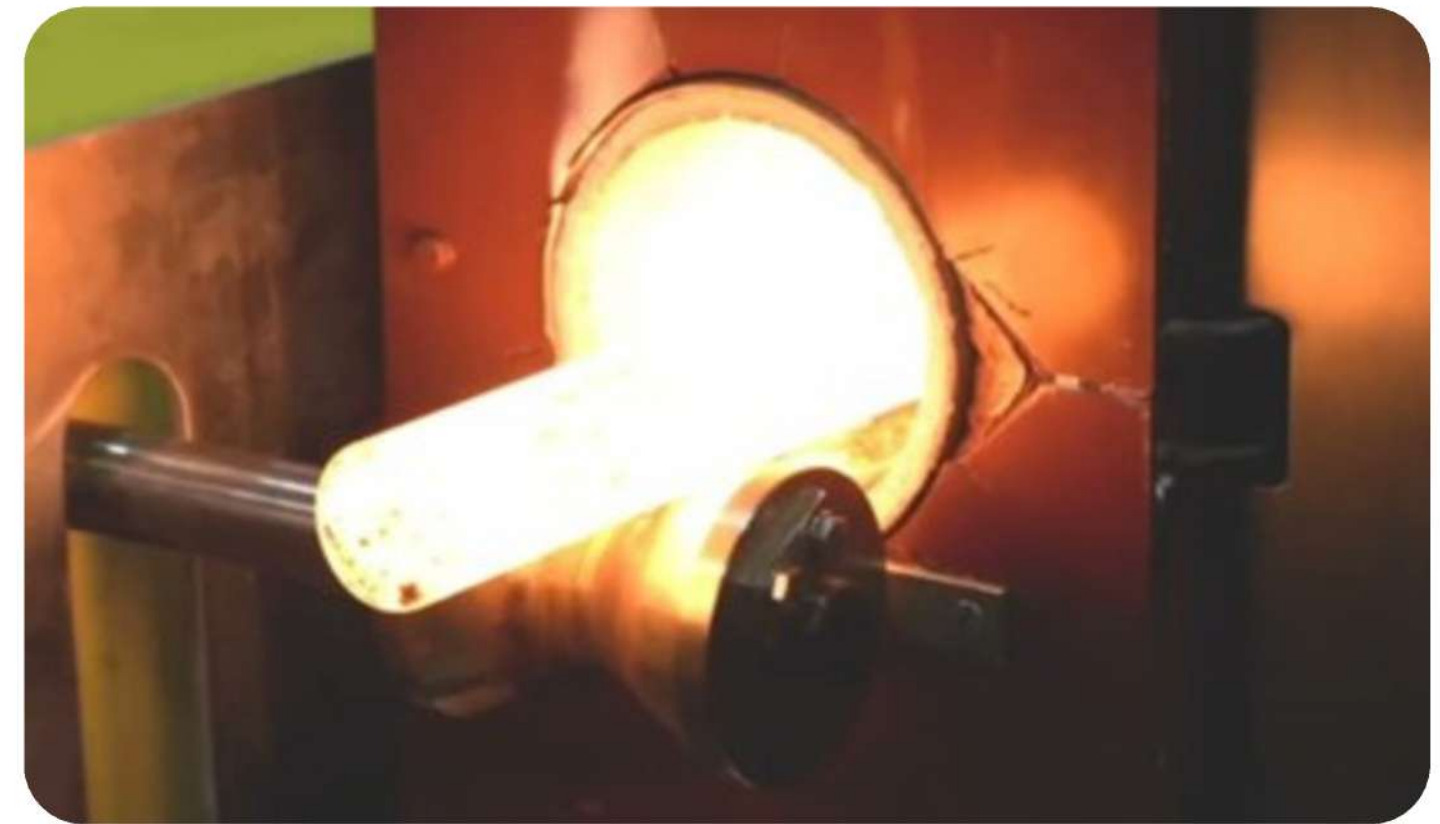
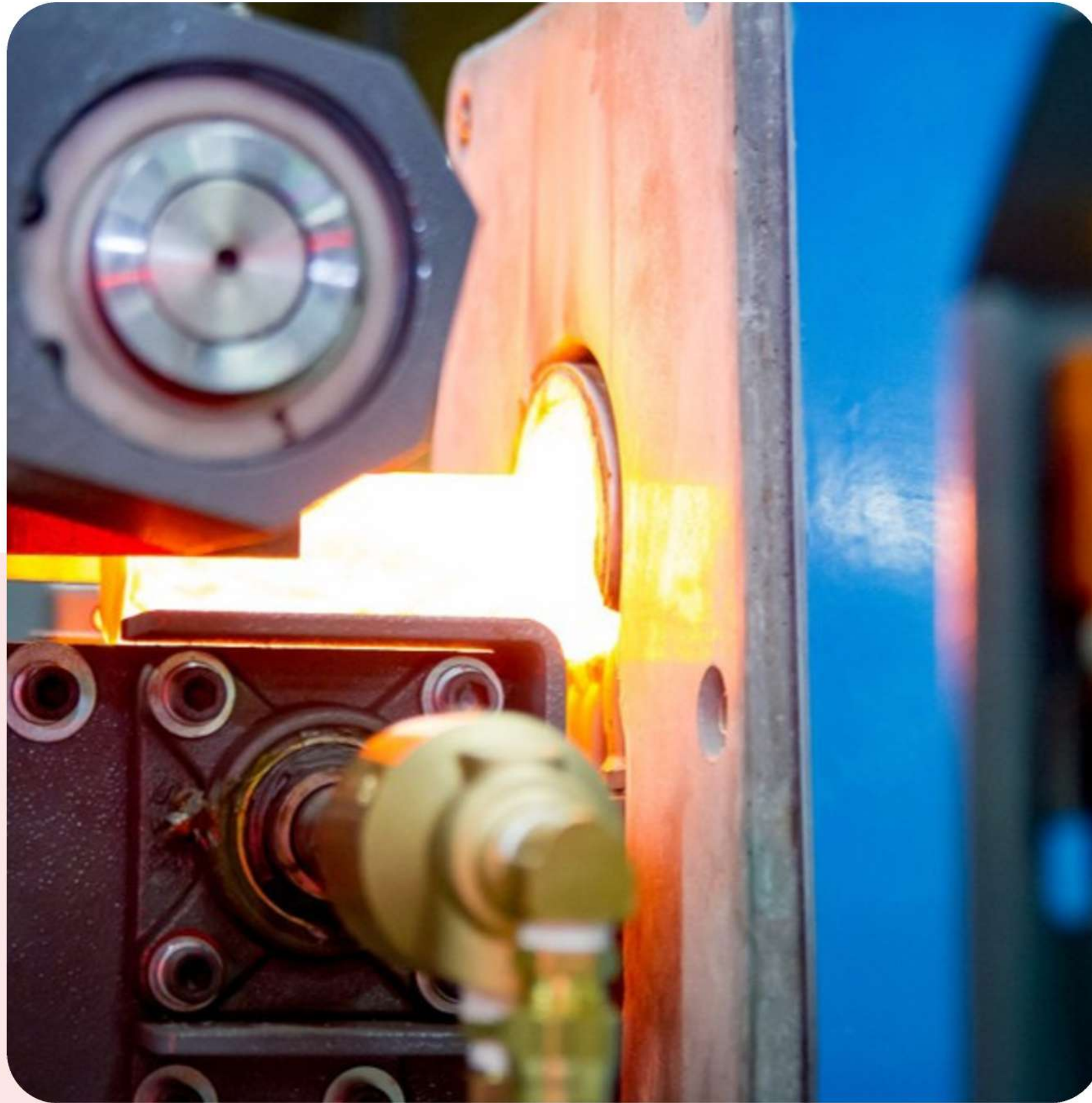
02

03 | Product Capability: OD Diameter 50mm to 300mm (0.250 Kg To 8.0 Kg Weight) (forging & machining)



Production Capacity:
250 Ton / Month

04



PRODUCTS

- Forged Rings
- Machined Rings
- Automotive Rings
- Hub Wheel Bearing Rings
- All Type of Rings





OUR PROCESS



QUALITY COMMITMENT



- Bene Enterprise are sincerely committed to deliver the quality products satisfying all customer needs with effort towards continual improvement in quality management system by analyzing risk and opportunity.
- **Our Laboratory Facility:**



Olympus Microscope



Intra TalyProfile



Profile Projector



Eddy Current Testing Machine

MANAGEMENT TEAMS



Mr. Kirti Dudani
(MD)

Mr. Harsh Dudani
(Director)

Mr. Prem Sapariya
(GM)

Mr. Mitesh Tholiya
(Admin)





CONTACT US

We're dedicated to providing high-quality bearings and exceptional service. Whether you need assistance with product selection, have a technical question, or require a custom solution, our expert team is here to help.



+91 93741 02057
+91 98983 65296



info@beneenterprise.com



www.beneenterprise.com



Plot No G2130, Kishan Gate, Road – I, Kishan
Auto Road, GIDC Lodhika, Metoda-360021

